

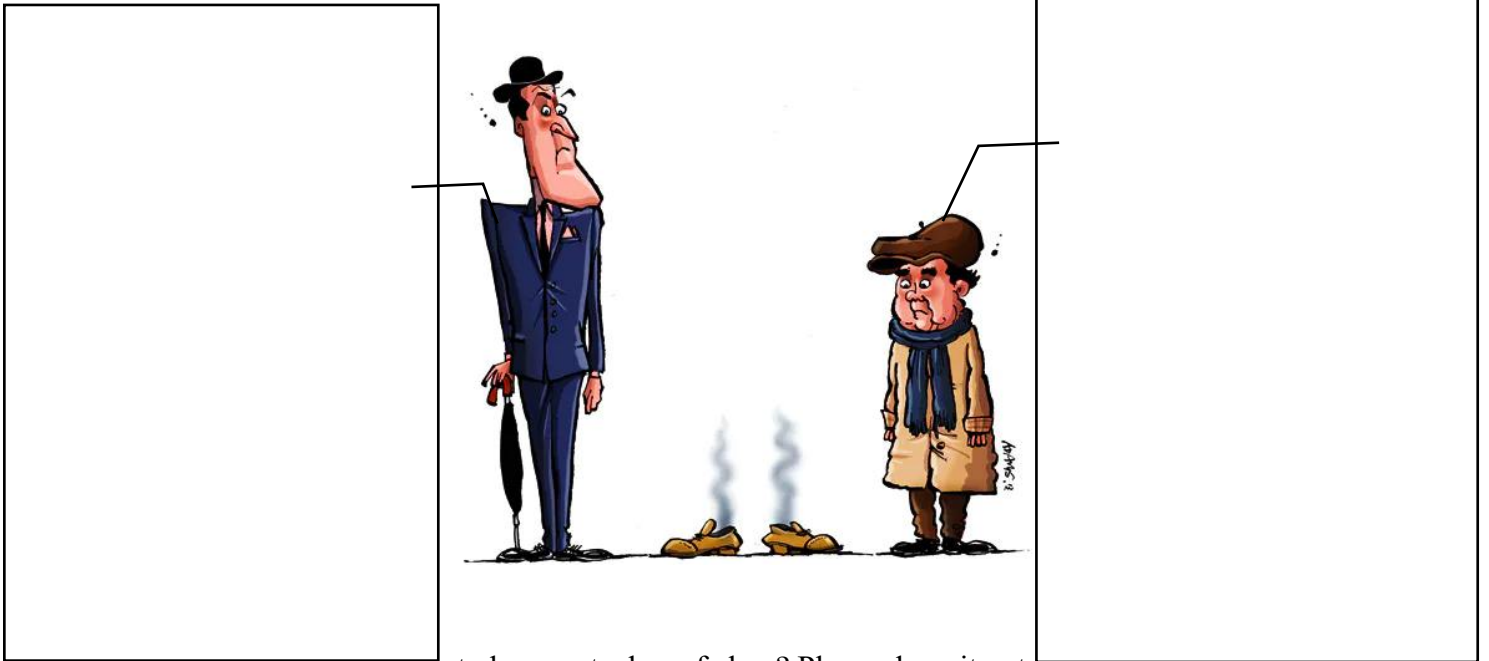
A Closer Look into Movie from the View of M.A. Students

Class:

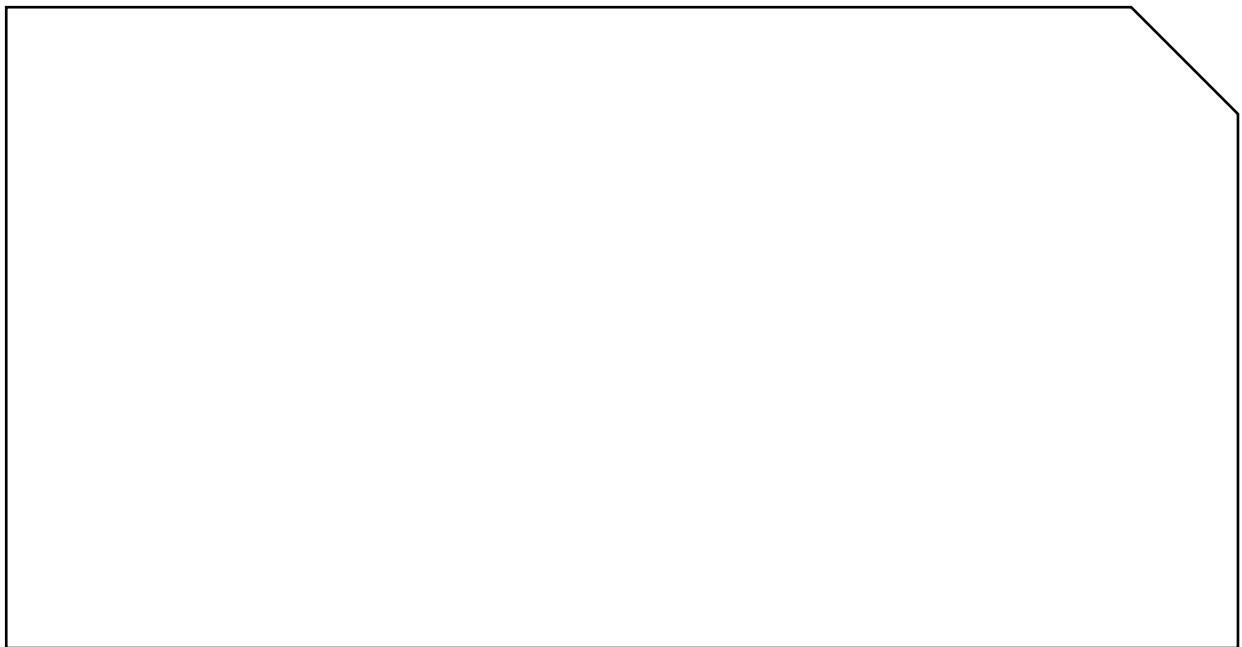
Number:

Name:

- ✓ Name of the Movie:
- ✓ Theme of the Movie:
- ✓ How can “class” be embodied/be presented in the movie? In what category do you notice the difference? Please write it down.



- ✓ What “image” appear to be a metaphor of class? Please draw it out.



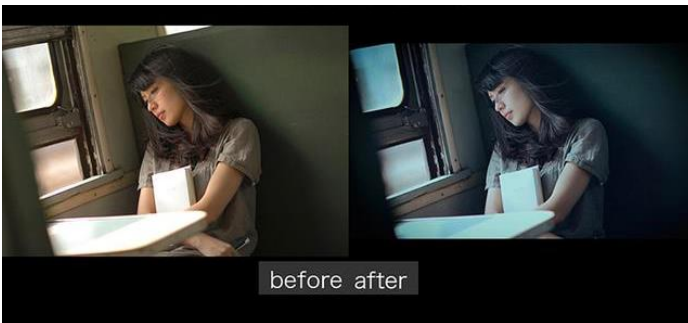
As a student from Multi-media Animation, can you try analyzing the film through your professional perspective?

Lighting?



Does the lighting influence or symbolize anything in the movie?

Tone?



What is the tone of the movie? How does the tone affect the movie?

Camera?